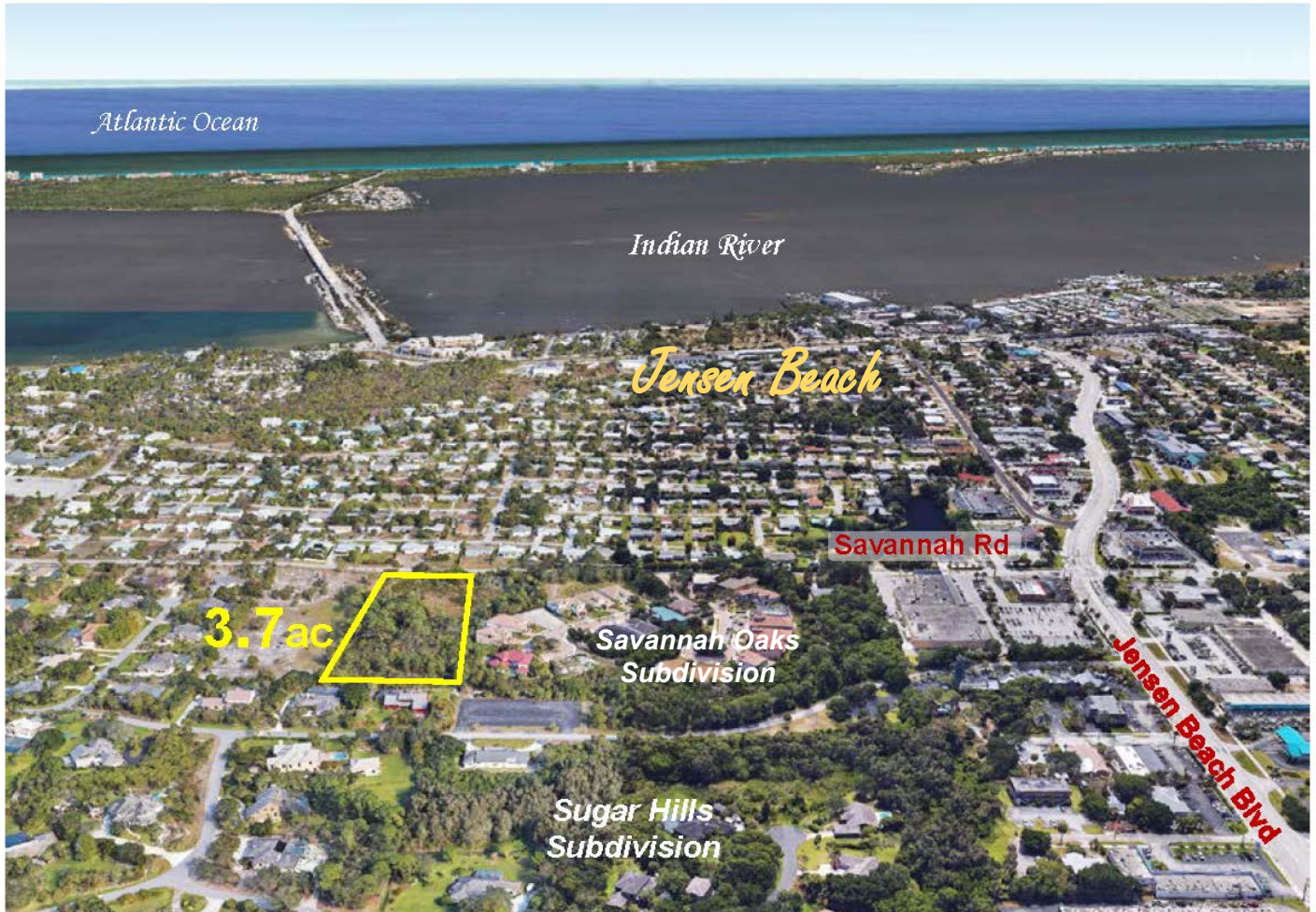


3.7ac Estate Parcel

NE Savannah Road, Jensen Beach, Florida



- Beautiful High Elevation Estate Homesite
- Picturesque Sloping, Wooded Site
- 245 ft Frontage on NE Savannah Road
- Adjacent to Upscale Developments
- Convenient, yet Secluded Location
- Unique one-of-a-kind Offering
- Zoning: R-2 Single Family Residential District
- Future Land Use: Low Density, up to 5du per acre
- Possible Owner Financing

www.waltersco.com • email: mark@waltersco.com

531 South US Hwy 1, Suite B • Fort Pierce, FL 34950

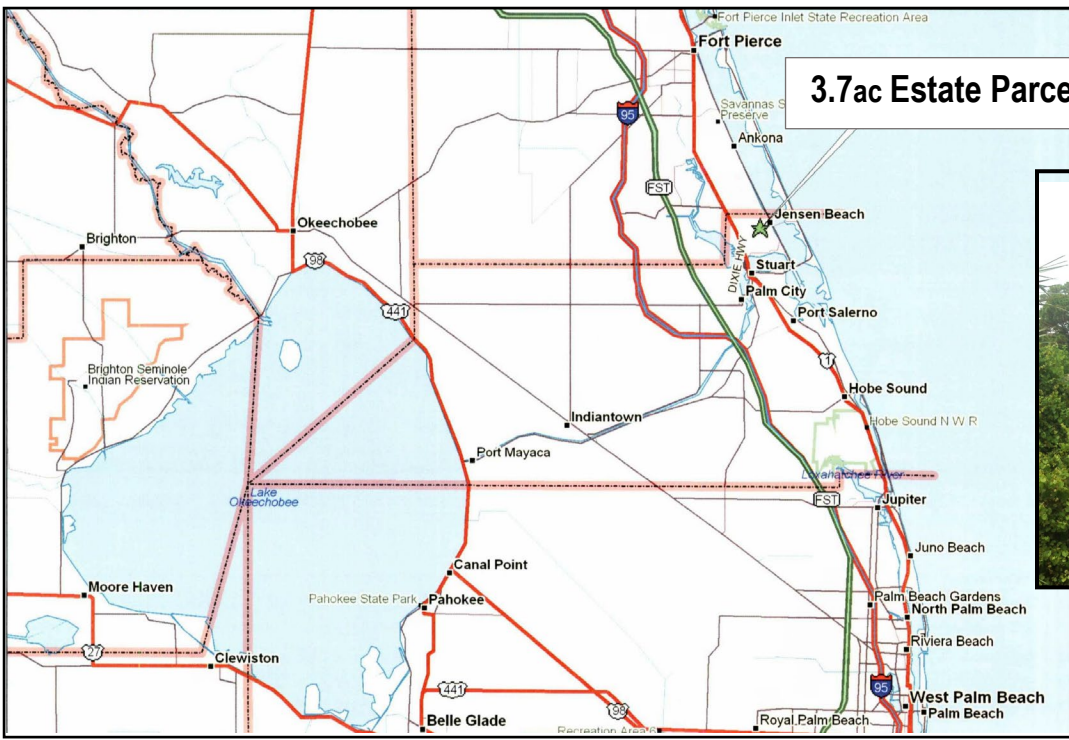
(772) 468-8306 • fax (772) 497-5096

FLAU1555AB1833



\$329,000.





MLS # RX-10148105